

**MICRO-Click torque wrenches with ratchet feature and automatic release.**

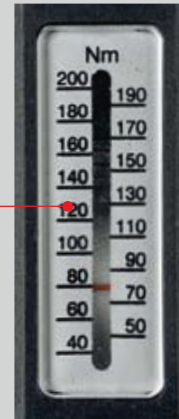
**High accuracy of +/- 3% conforms with DIN/ISO.**

**2 year  
guarantee**

For full professional use!

**Large, clearly legible scale for exact adjustment of desired torque by turning knurled adjustment ring on end of handle.**

**Ratchet mechanism with reversing lever for changing ratcheting direction. Automatic quick release: Clearly audible and perceptible "click" upon reaching set torque.**



### **MICRO-Click 200/S Torque Wrench**

With 1/2" square drive to DIN 3120 (convertible for left-hand threads). For torques from 40 to 200Nm. Otherwise as described above.

**NO 23 353**

### **MICRO-Click 100/S Torque Wrench**

With 3/8" square drive to DIN 3120 (convertible for left-hand threads). For torques from 20 to 100Nm. Particularly suitable for motor-bikes. Otherwise as described above.

**NO 23 351**

### **MICRO-Click 30/S Torque Wrench**

With 1/4" square drive to DIN 3120. For torques from 5 to 30Nm. For tightening all types of bolts up to M8 (13mm head). Otherwise as described above.

**NO 23 349**



Torque can be set by turning the knurled ring at the end of the handle. Push in ring to block in position.



MICRO-Click torque wrenches are precision tools. They are packaged in a sturdy and practical plastic storage box.



**MICRO-Click 100/S**

**MICRO-Click 30/S**

MM	HEX	INHEX	FM-TX	M-TX	Nm
M 1,6	3,2	SW 1,5			-
M 2	4	SW 2	TX 6		-
2 - 2,5			TX 7		
M 2,5	5	SW 2	TX 8		-
2,9 - 3			TX 9		
M 3	5,5	SW 2,5	TX 10	E 4	-
(M 3,5)	6	-	TX 15		-
M 4	7	SW 3	TX 20	E 5	3
M 5	8	SW 4	TX 25	E 6	5,9
4,5 - 6			TX 27		
M 6	10	SW 5	TX 30	E 8	10
(M 7)	11	-	TX 40		-
M 8	13	SW 6	TX 40	E 10	25
8-10			TX 45		
M 10	(16) 17	SW 8	TX 50	E 12	49
M 12	(18) 19	SW 10	TX 55	E 14	85
(M 14)	(21) 22	SW 12	TX 60	E 18	135
M 16	24	SW 14	TX 70	E 20	210
(M 18)	27	SW 14	TX 80	E 24	300
M 20	30	SW 17	TX 90	E 24	425
(M 22)	(34) 32	-			580
M 24	36	SW 19			740

Tightening torques for bolt shanks with standard metric threads (DIN 13, Part 13) and head contact dimensions (DIN 912, 931, 934). The coefficient of friction was determined using an untreated and unplated bolt (ungreased, lightly oiled).

© by PROXXON



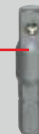
### MICRO-Click Torque Screwdriver 5/S

For precisely torquing screws between 1 and 5Nm.

Clearly audible and detectible "click" when the selected torque is reached. High repeatability with 6% accuracy. The scale is clear and easy to read. Standard 1/4" bits are clamped in a spring release chuck.

A hex to square adapter is included.

The kit is supplied in a sturdy plastic case.



**NO 23 347**

