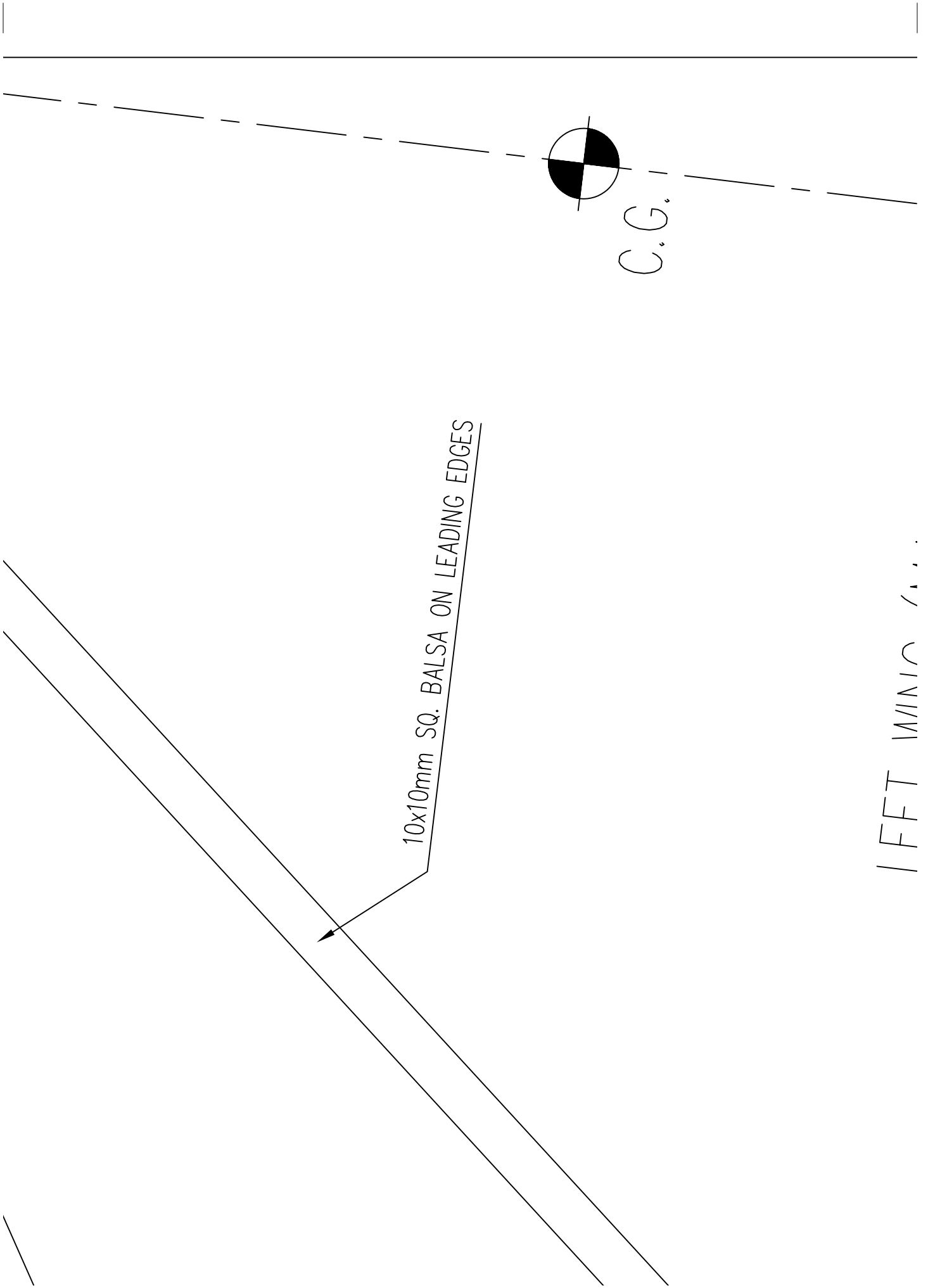


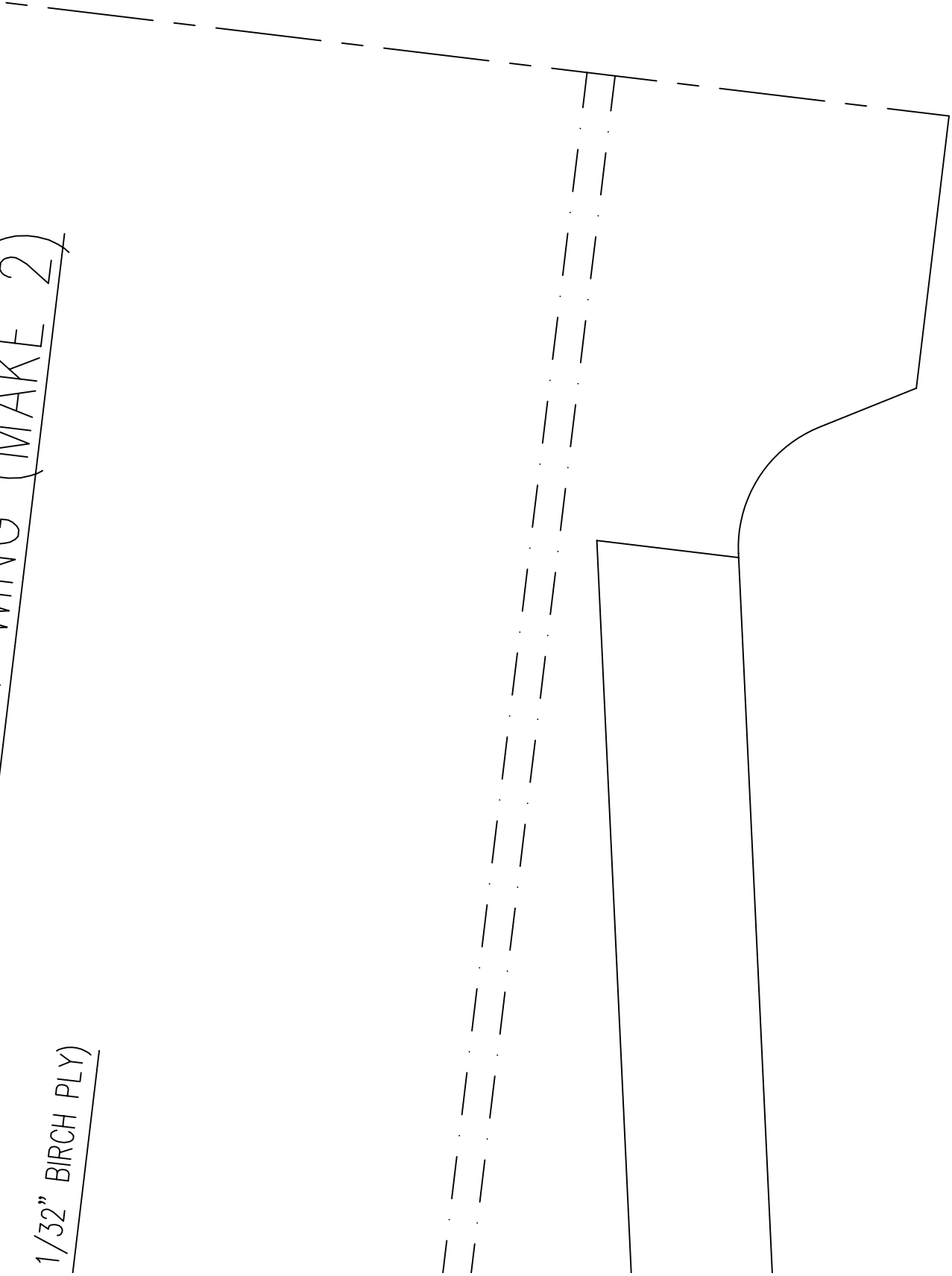
10x10mm SQ. Balsa



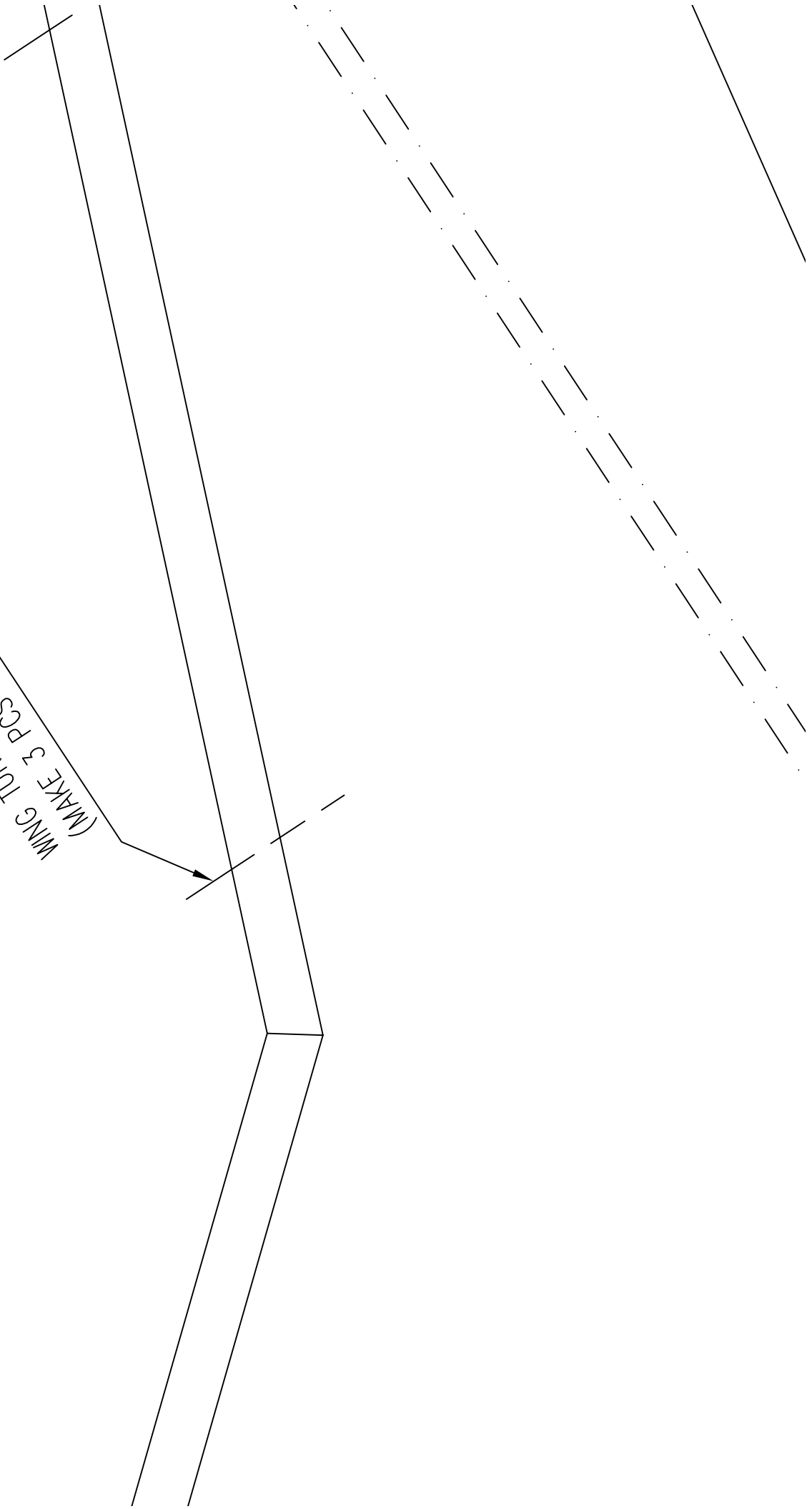
LEFT WING PLAN

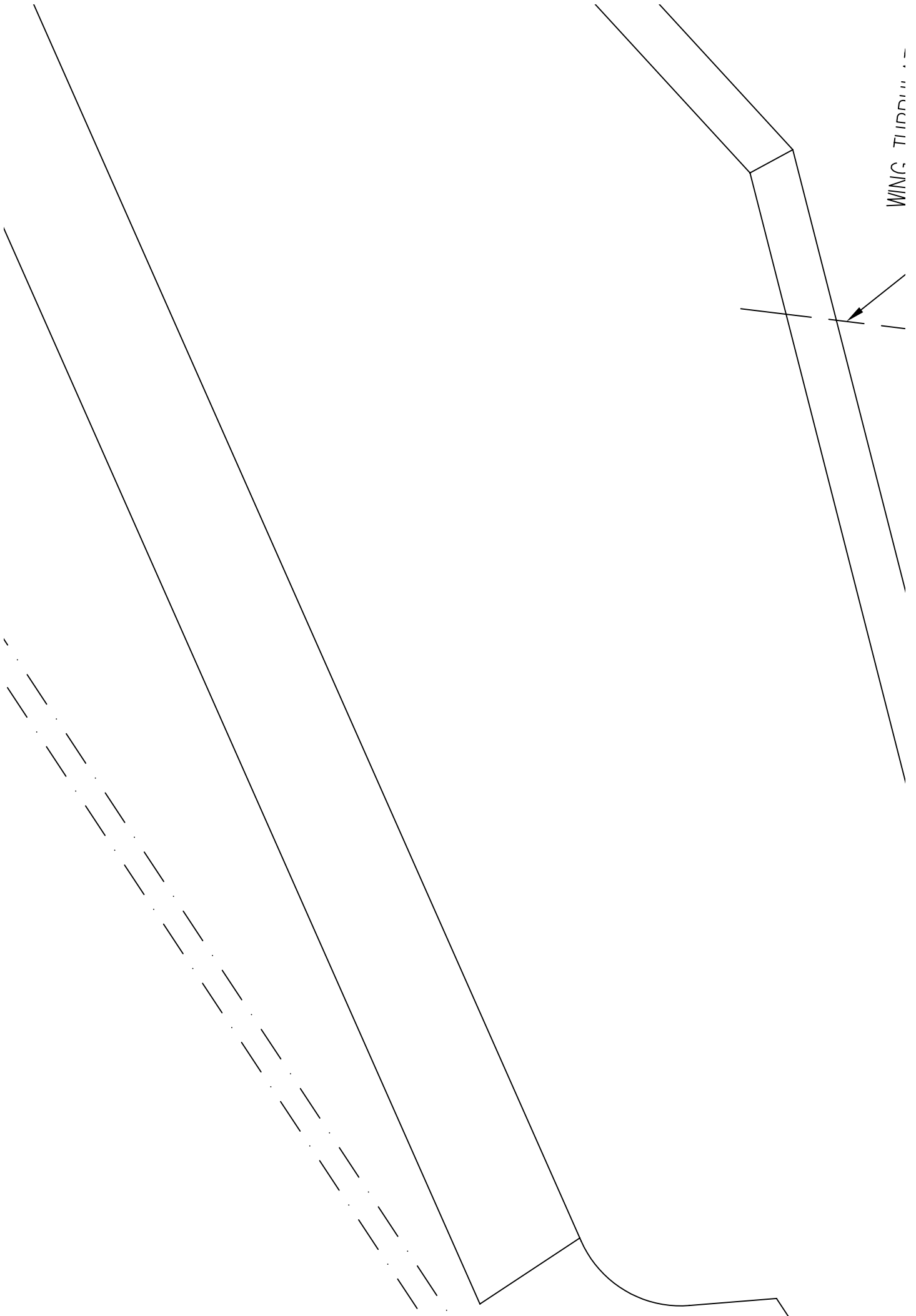
WING (MAKE 2)

1/32" BIRCH PLY



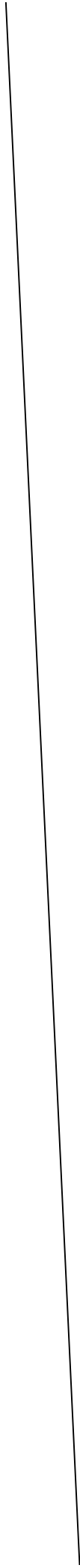
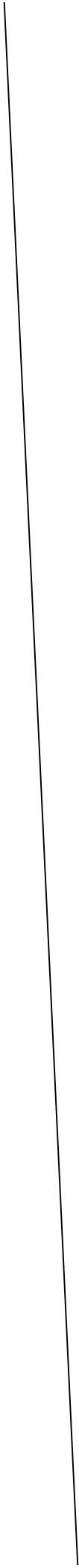
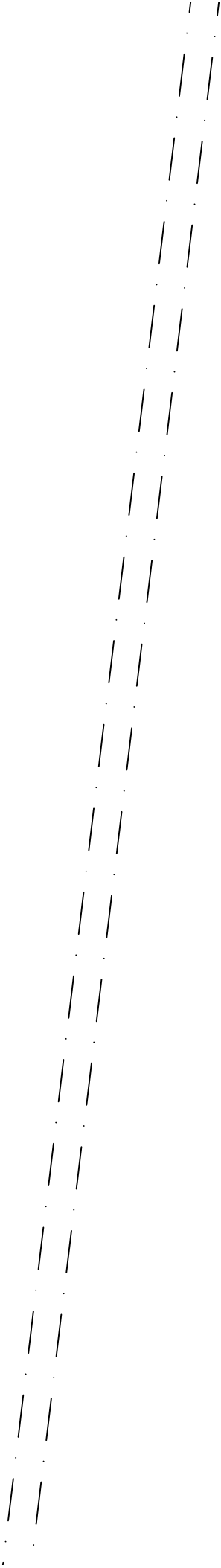
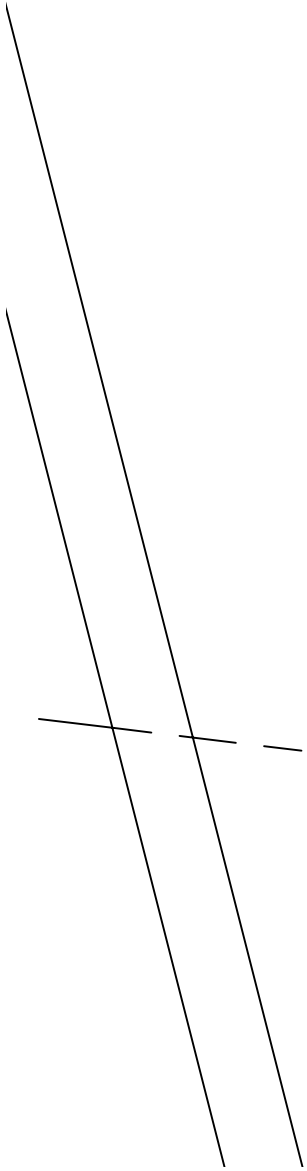
WING TURBULATORS
(MAKE 3 PCS FROM 1/32" BIRCH PLY)





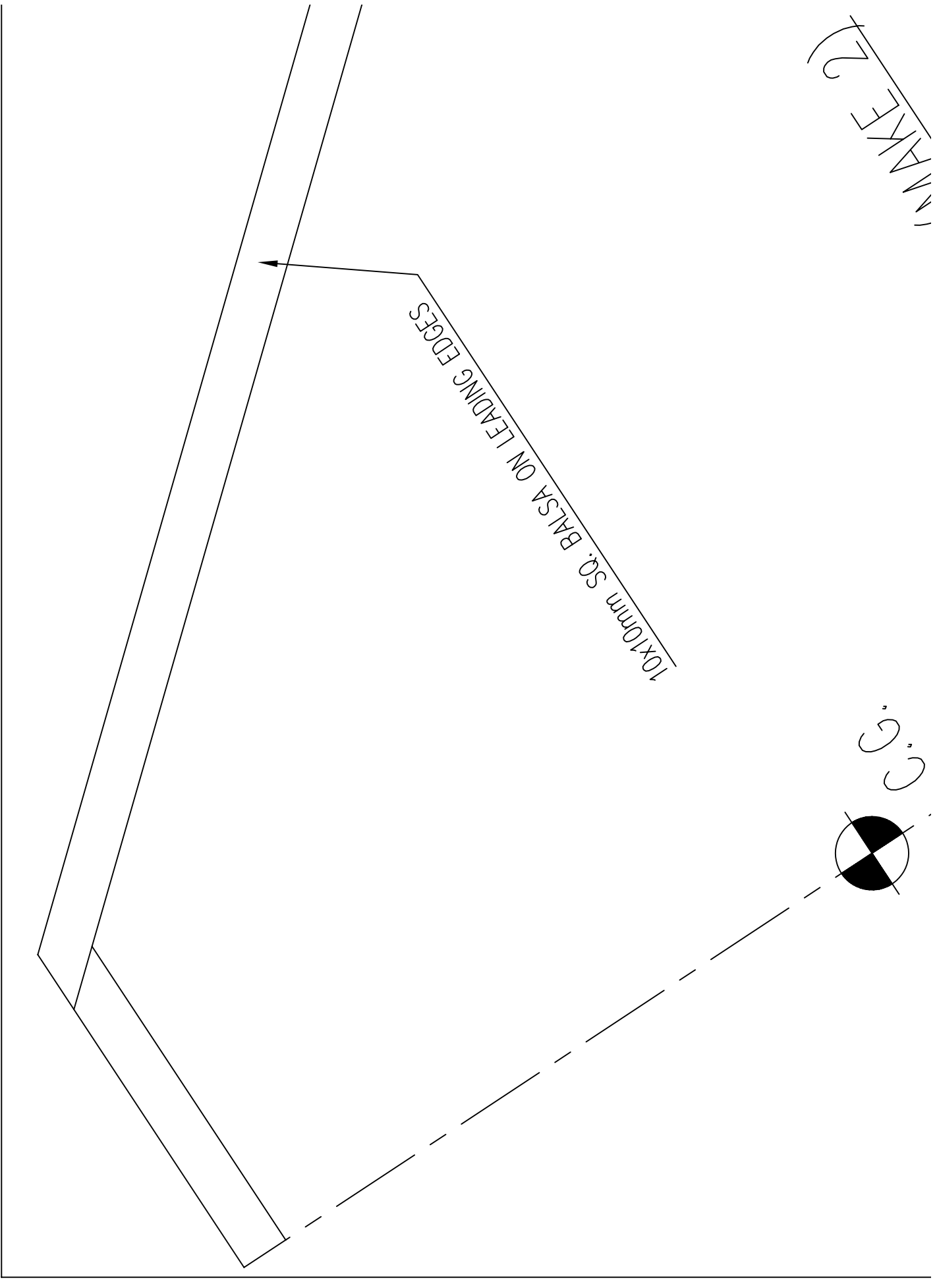
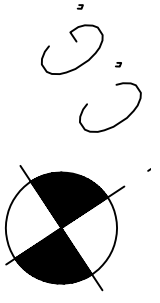
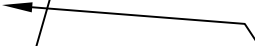
WING TIP

..... TURBULATORS
(MAKE 3 PCS FROM

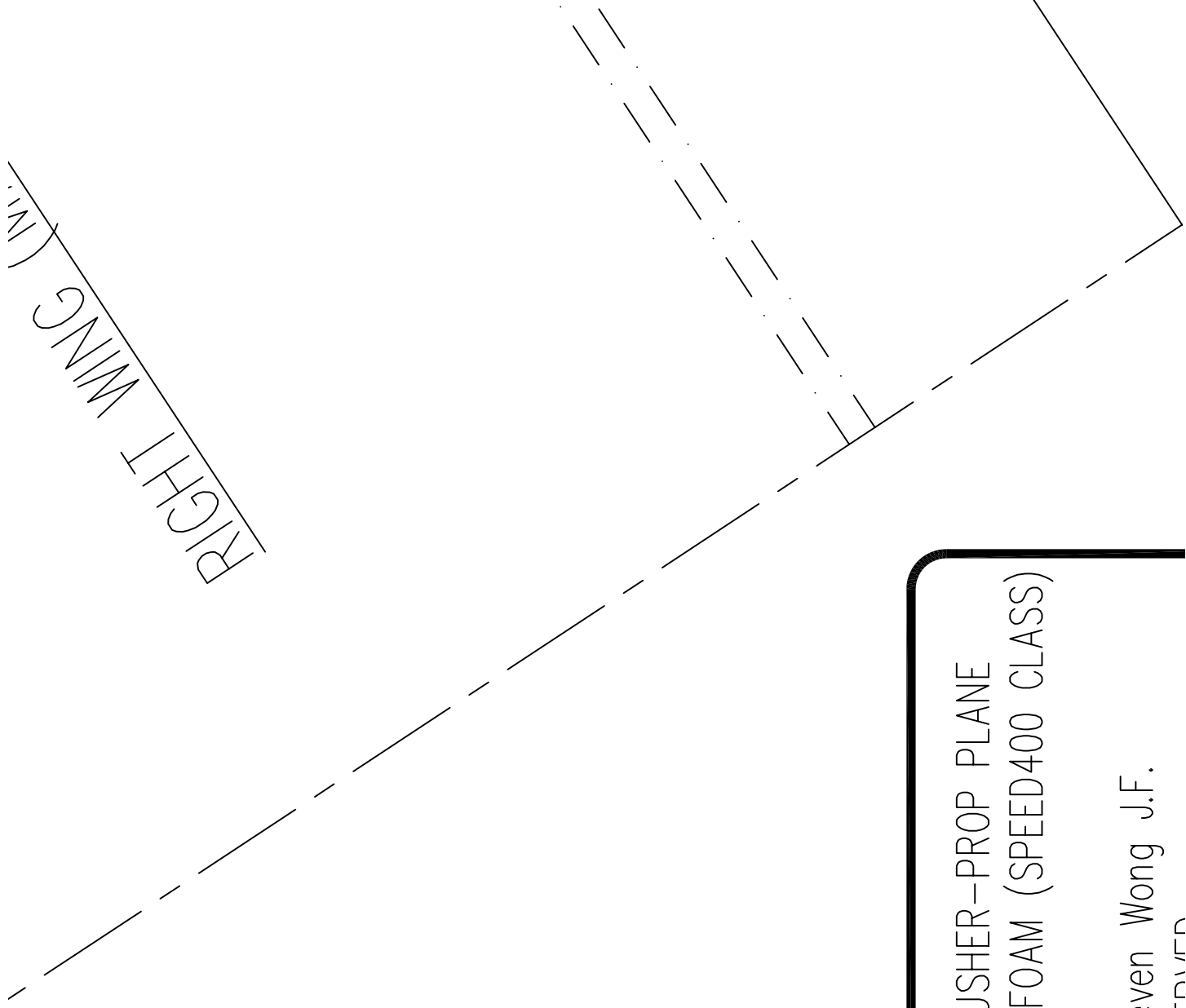


MAKE 2

10x10mm SQ. Balsa ON LEADING EDGES



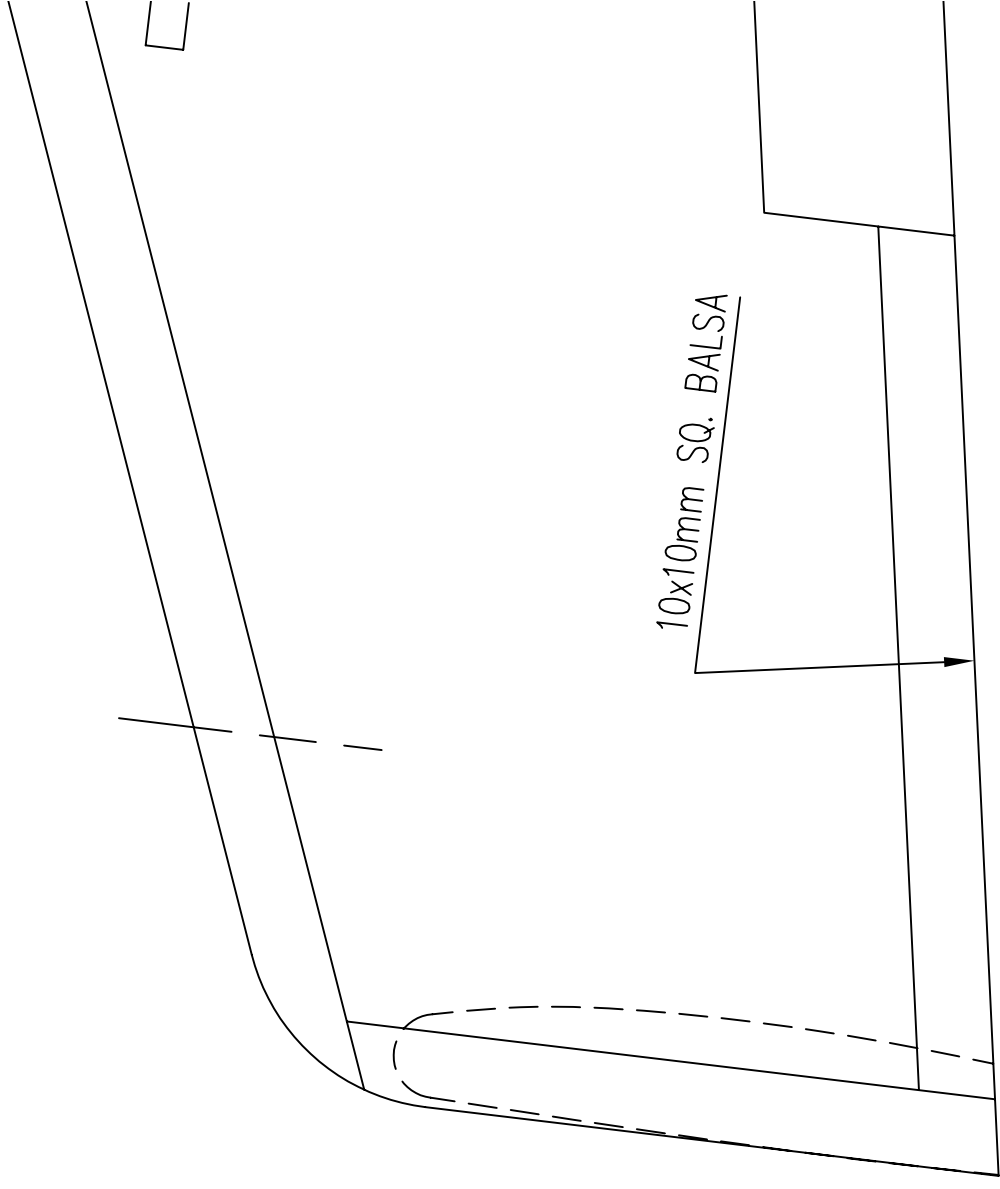
RIGHT WING (mm)



COZY MARK IV CANARD PUSHER-PROP PLANE
FOR 5mm THICK DEPRON FOAM (SPEED400 CLASS)
DRAWING 1 OF 3

Designed & Drawn by: Steven Wong J.F.
ALL DRAWING RIGHTS RESERVED

ALL DRAWING RIGHTS RESERVED
Drawn Date : 14th January 2005



50mm
40mm
30mm
20mm
10mm

1" 2" 3" 4" 5" 6"